

JACK DAVIS



# SILVER LINING

## ARTIST STATEMENT

My most recent body of work 'Silver Lining' celebrates the dramatic, ever changing weather along the North Coast of Cornwall. I am drawn to this location because of the rugged cliffs, expansive beaches and unrelenting energy from the Atlantic Ocean. Experiencing all four seasons in a single day, I find this coastline exhilarating, observing moments of profound beauty juxtaposed against the terrifying power of the ocean.

There is a brutal beauty witnessed along the North Coast and my painting's emulate this paradox. Representing the struggle between darkness and light, in search of those moments of salvation, I capture these fleeting silver linings in paint so they can continue to resonate.

Jack Davis

REQUIEM

Oil on canvas

200 x 320 cm







SKY RIDGE

Oil on canvas

150 x 150 cm



DISTANT THUNDER AT POLZEATH

Oil on canvas

123 x 123 cm



STORM BREWING AT CONSTANTINE BAY

Oil on canvas

123 x 123 cm



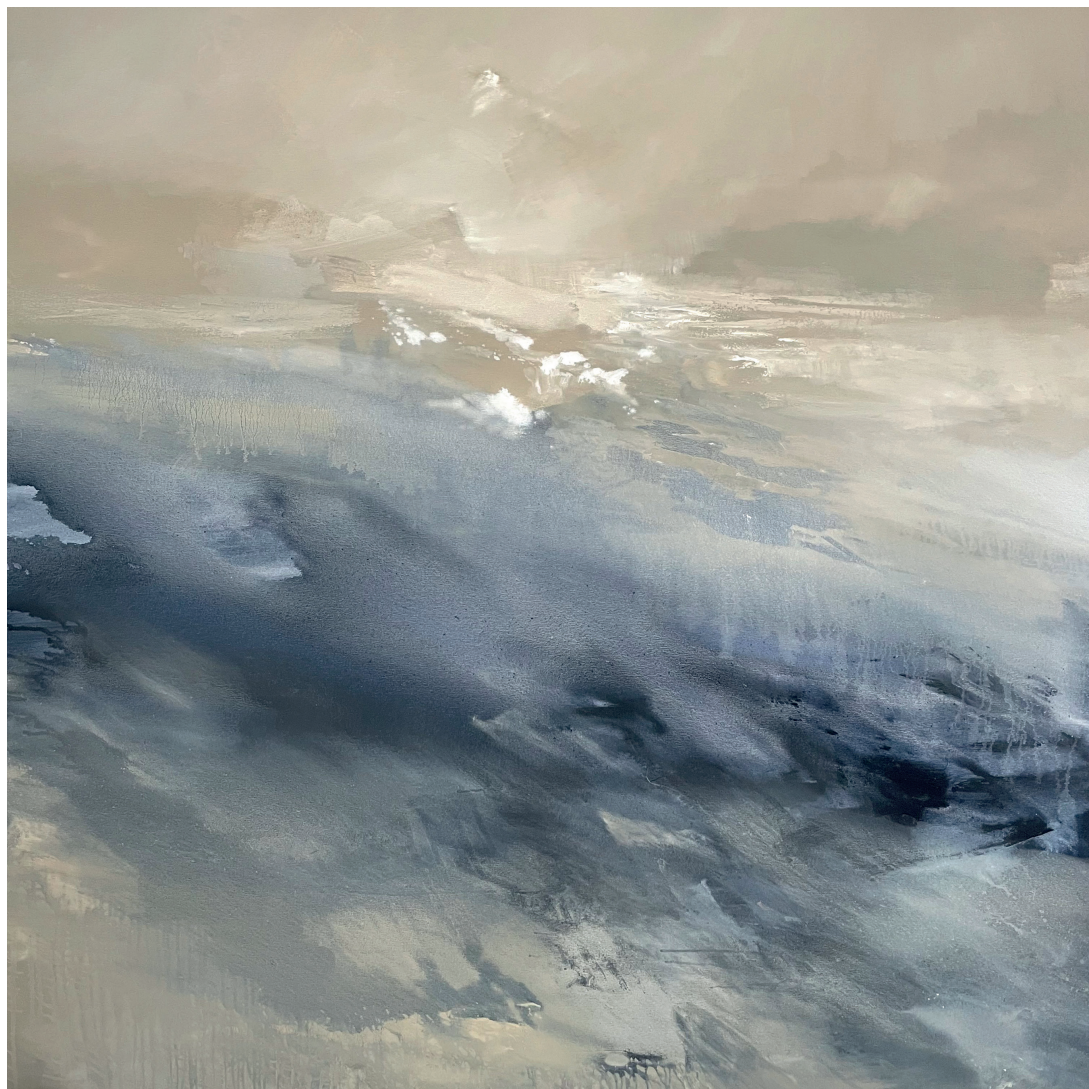


WEATHER THE STORM

Oil on canvas

125 x 180 cm





MURKY MIZZLE TOWARDS STEPPER POINT

Oil on canvas

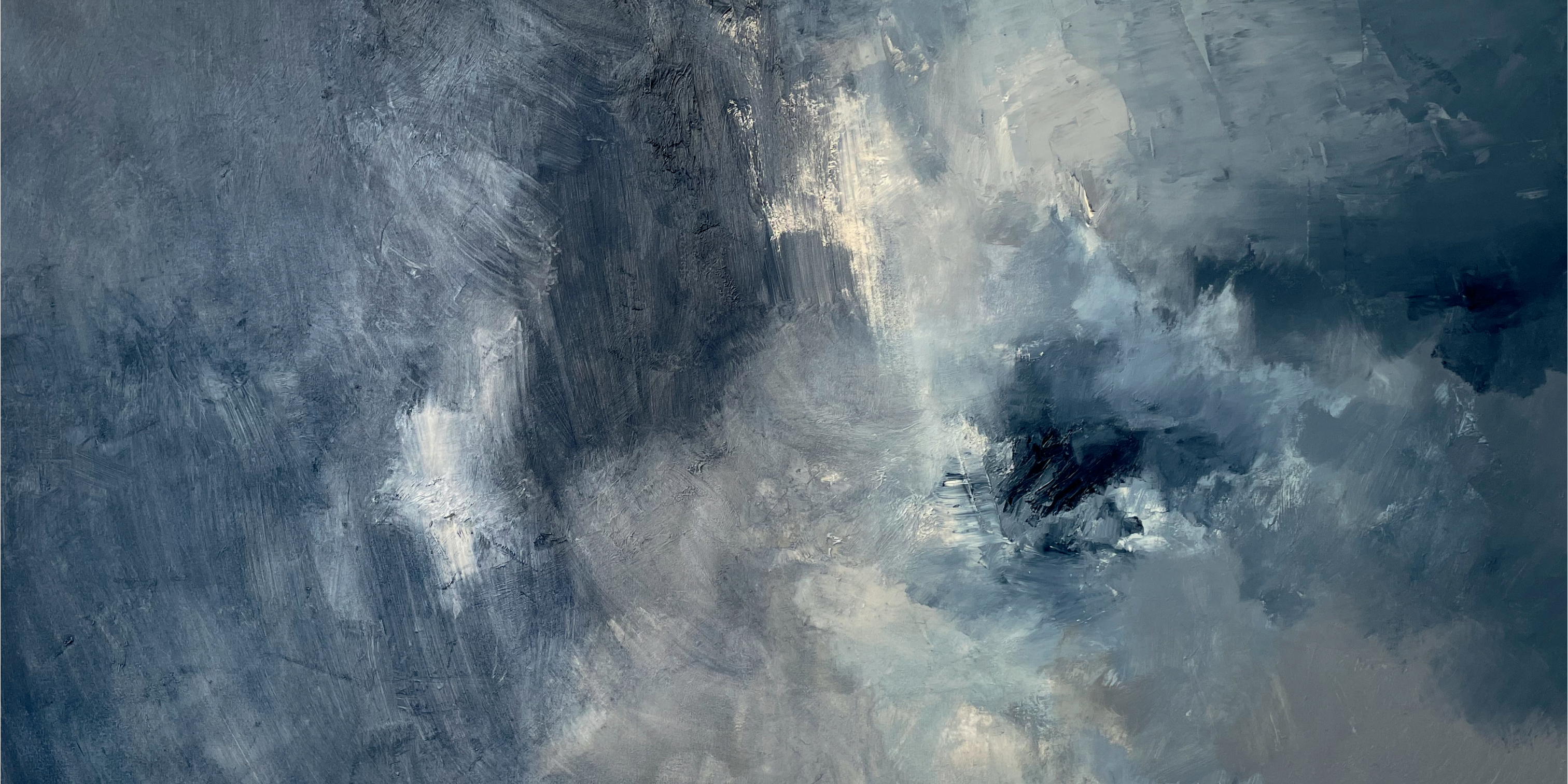
155 x 155 cm



MORNING MIST TOWARDS STEPPER POINT

Oil on canvas

155 x 155 cm

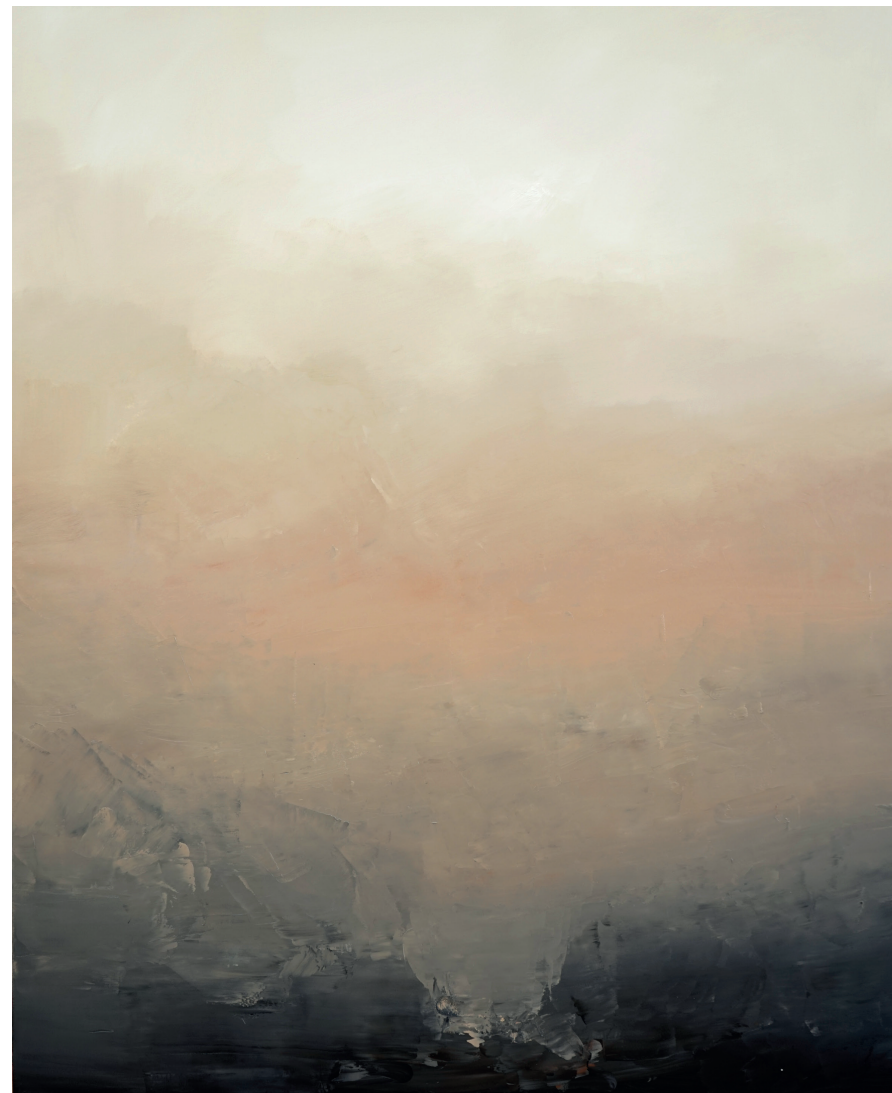




SILVER LINING

Oil on canvas

120 x 100 cm



ELEVATION

Oil on canvas

150 x 120 cm



FRONTIER

Oil on canvas

180 x 150 cm

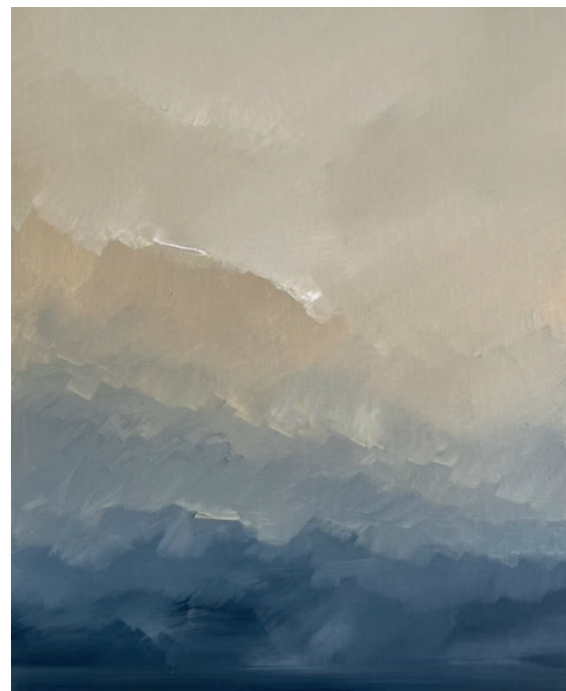




DUSK AT TREBETHERICK POINT

Oil on linen

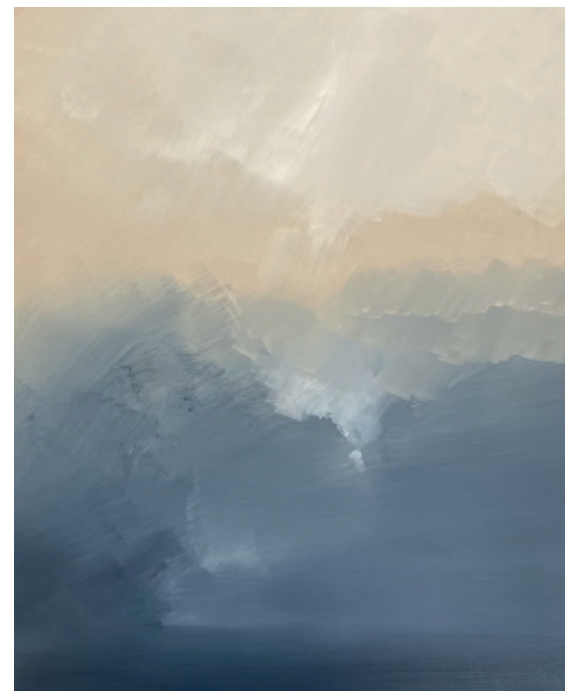
50 x 40 cm



STORM CLEARING AT POLZEATH

Oil on linen

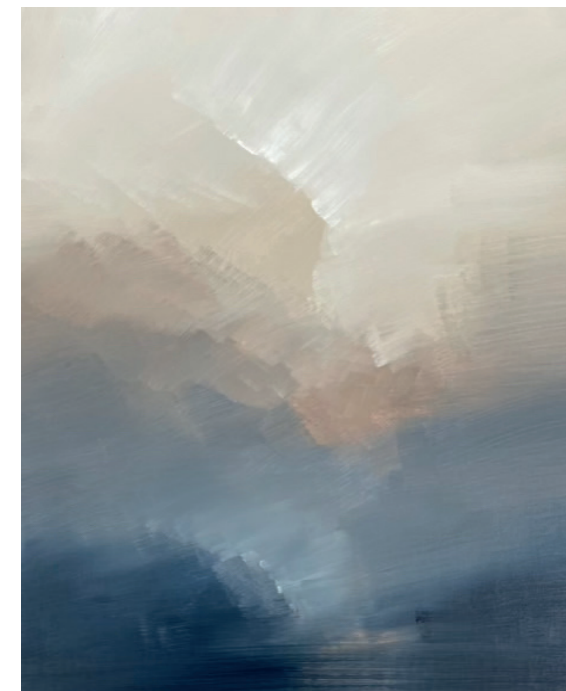
50 x 40 cm



ATLANTIC FRONT

Oil on linen

50 x 40 cm



STEPPER POINT RADIANCE

Oil on linen

50 x 40 cm





[ENQUIRIES@THEDRANGGALLERY.COM](mailto:ENQUIRIES@THEDRANGGALLERY.COM)

[WWW.THEDRANGGALLERY.COM](http://WWW.THEDRANGGALLERY.COM)